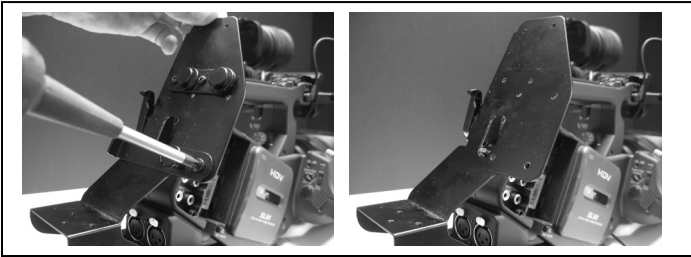


Canon XL H1 Camera Mount Kit



The package contains:

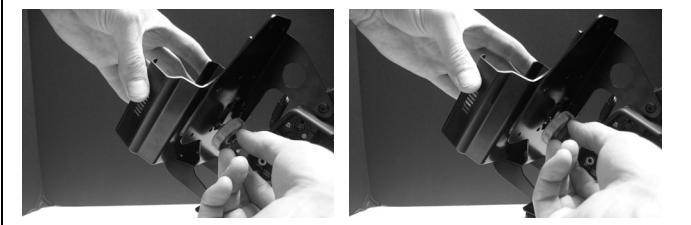
Cradle
Protective Spacer
Camera Mount Screw Assembly



- 1) Attach the Canon XL H1 Adapter Holder. See XL H1 manual for more details.
- 2) Remove the Support Bars from the Adapter Holder using a Philips screwdriver.



- 3) Peel off the film on the Protective Spacer and apply the adhesive side of spacer to the Cradle.



- 4) Hold the Cradle on the outer side of the Adapter Holder.
- 5) Holding the inner screw of the Camera Mount Screw Assembly, screw into the Cradle until snug.



- 6) Vertically adjust the Cradle to the desired position.
- 7) Tighten outer ring of the Camera Mount Screw Assembly until snug.